



# New, Yes. Simply Versatile, Absolutely!

“Allows the confident use of the articulator to capture all of its functional benefits even when a facebow is not available.”

*Al Fillastre  
Owner, Ceram-O-Arts Dental Lab*



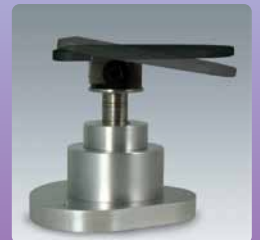
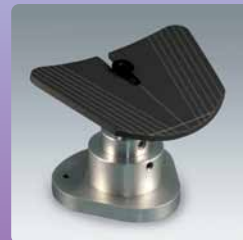
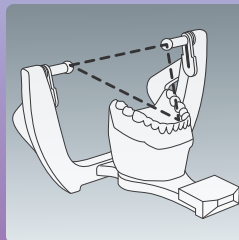
## Have You Tried It?

### Denar® Universal Occlusal Stand

Mount the working casts at Bonwill's Equilateral Triangle on Denar®, Hanau™ and Whip Mix® articulators.



- Flat & curved tables marked as esthetic templates.
- Flat table accepts Kois plate.
- Tables sit flat or at a 10 degree angle.



Call **800-626-5651** ext 1270  
to find out how easy these  
products are to use.



RESTORATIVE ORAL HEALTH  
[www.whipmix.com](http://www.whipmix.com)

Next Generation, Yes.  
Simply Accurate,  
Absolutely!

“Providing excellence in restorative care requires articulators that are regularly calibrated.”

*Jeff Stubblefield  
Technical Director DAL Signature Restorations*



Have You Tried It?

## Denar®/Hanau™ Verification Gage\*

Transfer casts between compatible articulators with confidence.

\* Also available for Denar® Mark 300 series and Whip Mix® articulators.



### 4 Quick Steps

1. Clean the surfaces.
2. Verify with mylar or shim.
3. If the pin falls through, the instrument is in calibration.
4. If the pin doesn't drop, calibrate the instrument.



Call **800-626-5651** ext 1270  
to find out how easy these  
products are to use.



RESTORATIVE ORAL HEALTH  
[www.whipmix.com](http://www.whipmix.com)