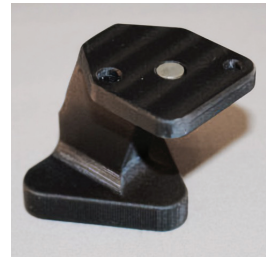
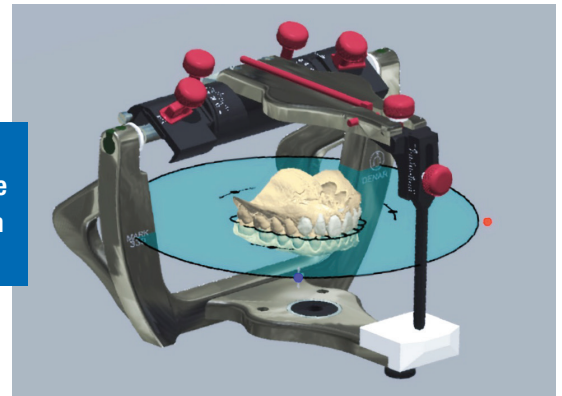


Virtual Articulation: How Accurate is it?

Dentistry in the digital environment brings new opportunities, different workflows, and interesting challenges. The concept of “good data in, good data out” still applies. Good data includes: patient specific records, accurate impressions, and proper alignment of models so that patient movement can be replicated. All of this leads to predictable end results, patient satisfaction, and happy dentists!

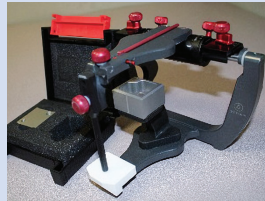
Using 3Shape dental design software and a few calibration tools, ensure that the alignment of the virtual articulator matches the benchtop articulator.

Denar® Mark 330 in 3Shape Dental Design software



Tech Steps:

- 1 Place the mounting stand on the lower member of the articulator, and the upper calibration object on stand (positive bumps align with divots on stand).



- 2 Using stone, mount the upper object to a magnetic mounting plate.



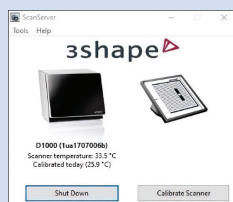
- 3 Remove mounting stand and attach the lower calibration object magnetically to the upper mounted object.



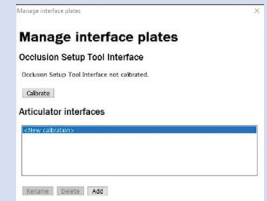
- 4 Using stone, mount the lower object to a magnetic mounting plate.



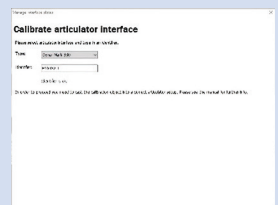
- 5 Open ScanServer on PC.



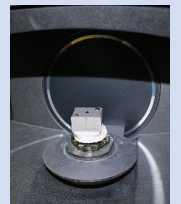
- 6 Click Tools, Manage Interface Plates.



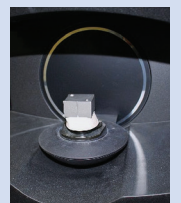
- 7 Select Mark 300 Series from the drop down menu, and type in a user defined calibration identifier.



- 8 Insert the upper calibration object into the scanner. Press continue and wait for process to complete.



- 9 Insert lower calibration object into the scanner. Press continue and wait for process to complete.



Following these simple steps will help ensure models are placed accurately in your virtual articulator.



800-626-5651
www.whipmix.com